



SAN JUAN

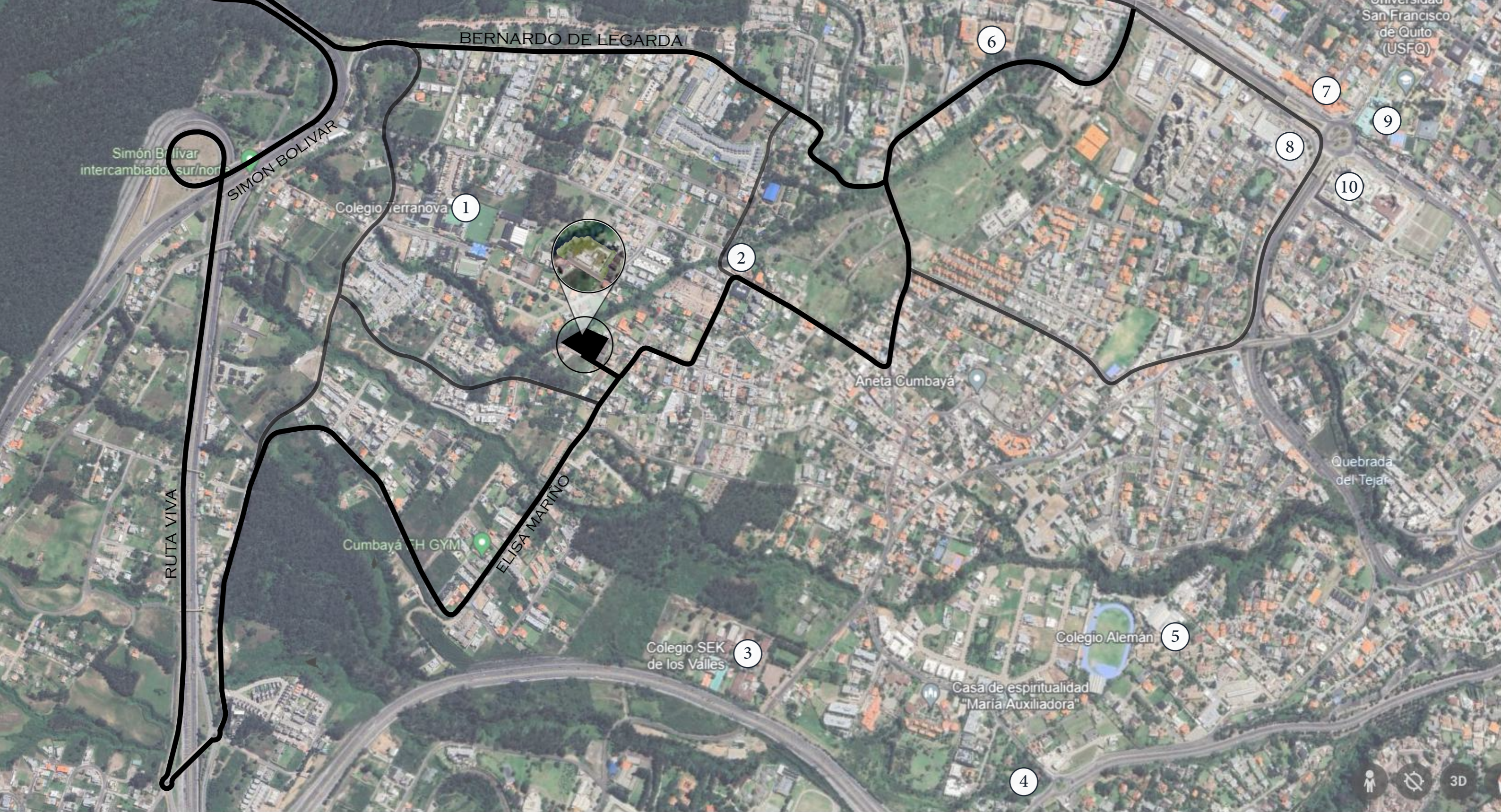
by fez



FACHADA FRONTAL



FACHADA L. IZQUIERDA



UBICACIÓN PRIVILEGIADA

- ① COLEGIO TERRANOVA
- ② FARMACIA PHARMACY
- ③ COLEGIO SEK

- ④ PLAZA AWKI
- ⑤ COLEGIO ALEMÁN
- ⑥ BANCO PICHINCHA

- ⑦ SUPERMAXI
- ⑧ UNVIERSIAD SAN FRANCISCO
- ⑨ PASEO SAN FRANCISCO



























32

APARTAMENTOS DE 2-3 DORMITORIOS

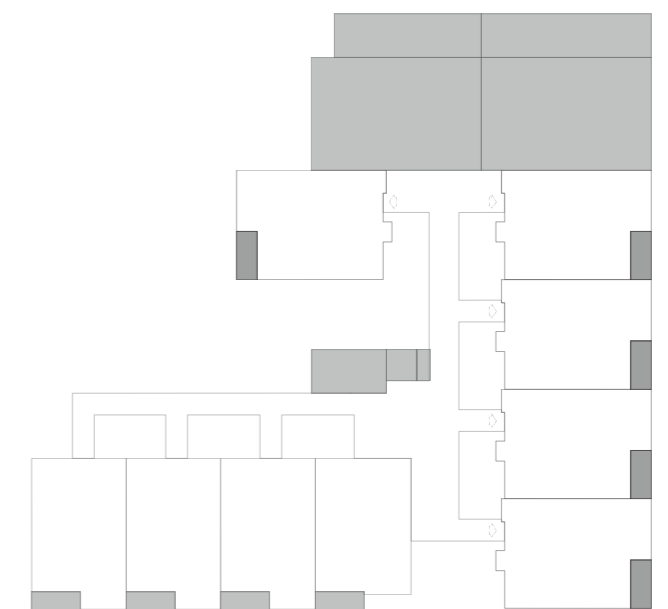
SAN JUAN

by fez

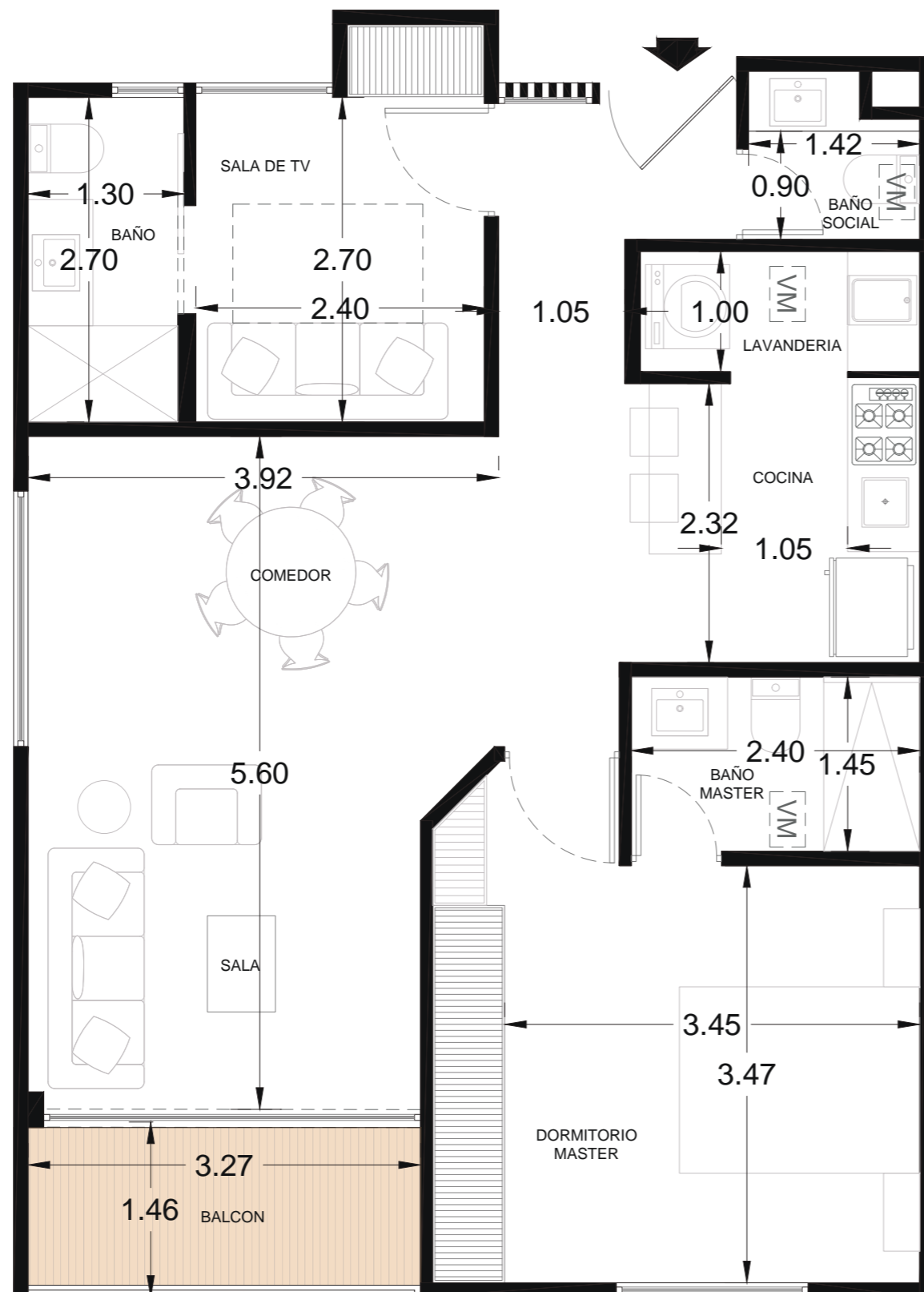
DEPTO TIPO

101 - 102 - 103 - 104
201 - 202 - 203 - 204 - 207
301 - 302 - 303 - 304 - 307

DORMITORIOS	2
BAÑOS	2.5
SALA	
COMEDOR	
COCINA	
LAVANDERÍA	
TERRAZA ACCESIBLE	
PARQUEADEROS	2
BODEGA	1



UBICACIÓN



SAN JUAN

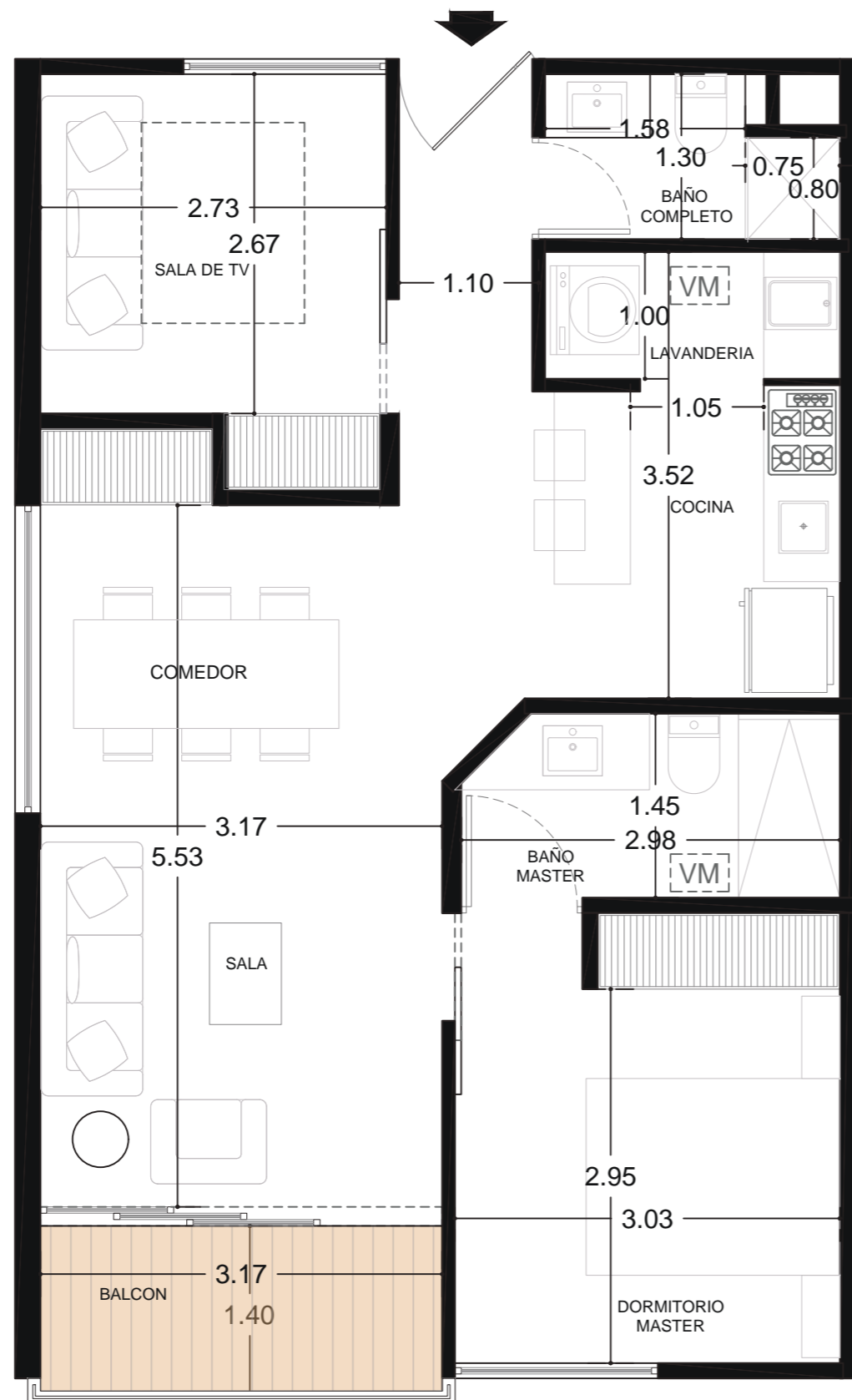
by fez

DEPTO TIPO

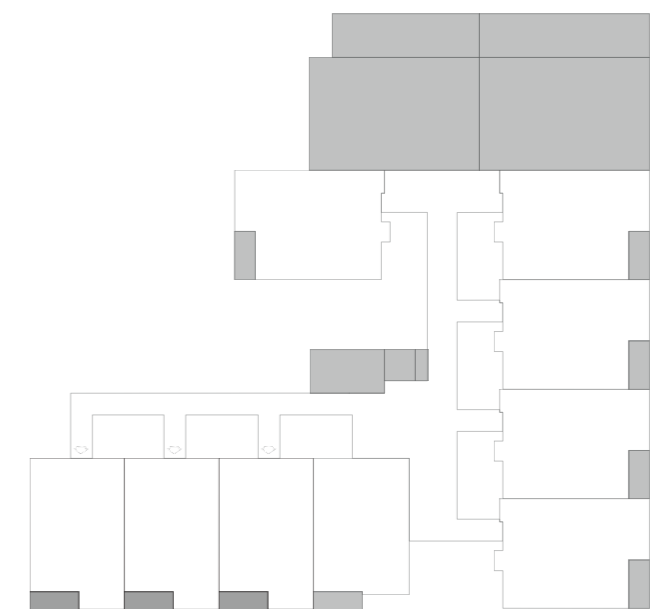
108 - 109 - 110

209 - 210 - 211

309 - 310 - 311



DORMITORIOS	2
BAÑOS	2
SALA	
COMEDOR	
COCINA	
LAVANDERÍA	
TERRAZA ACCESIBLE	
PARQUEADEROS	2
BODEGA	1





SAN JUAN

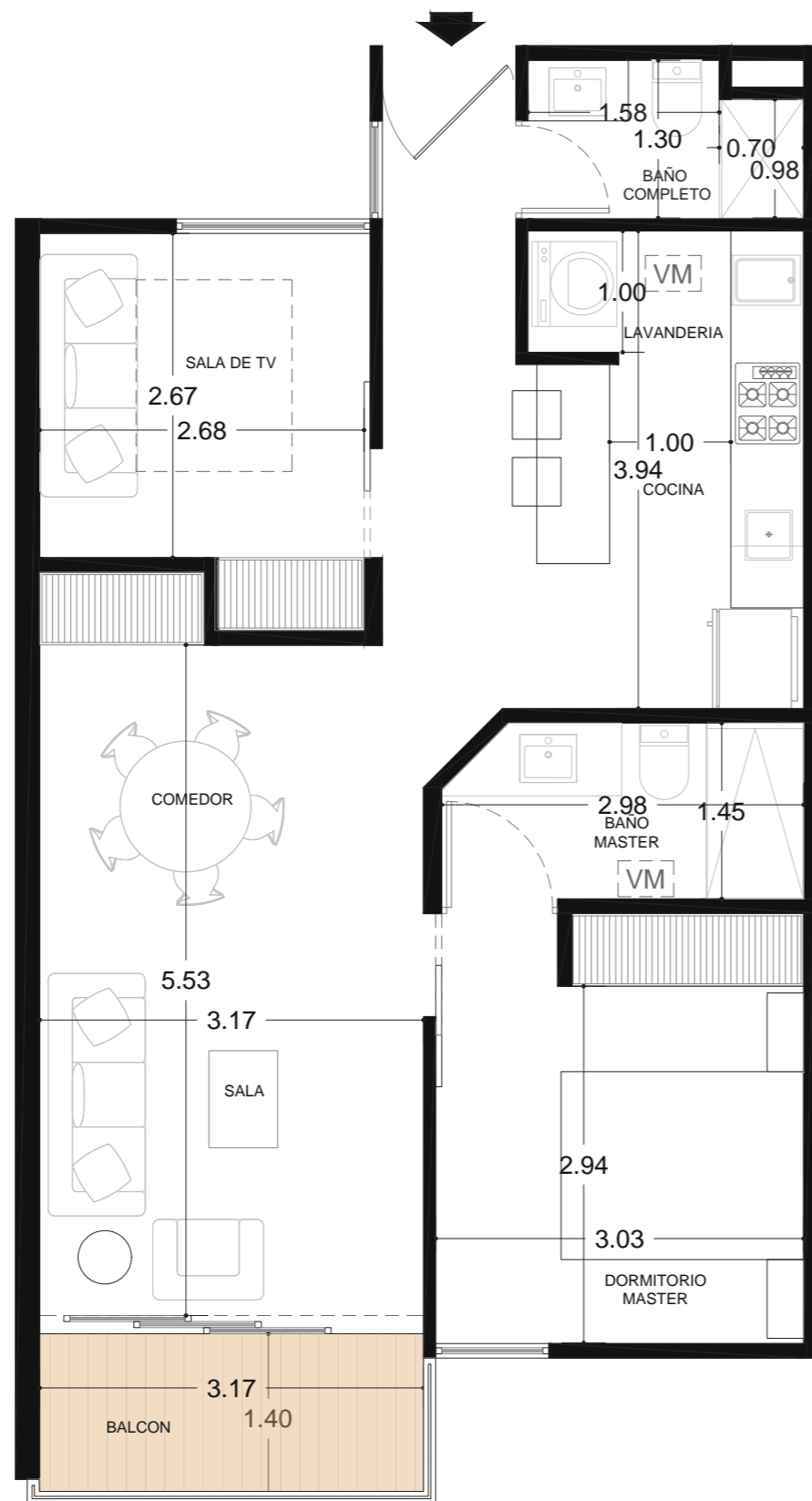
by fez

DEPTO TIPO

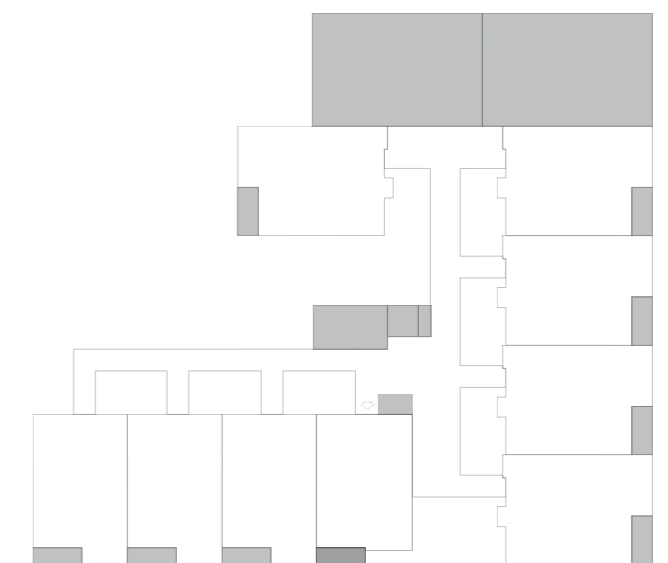
107

208

308



DORMITORIOS	2
BAÑOS	2
SALA	
COMEDOR	
COCINA	
LAVANDERÍA	
TERRAZA ACCESIBLE	
PARQUEADEROS	1
BODEGA	1



UBICACIÓN







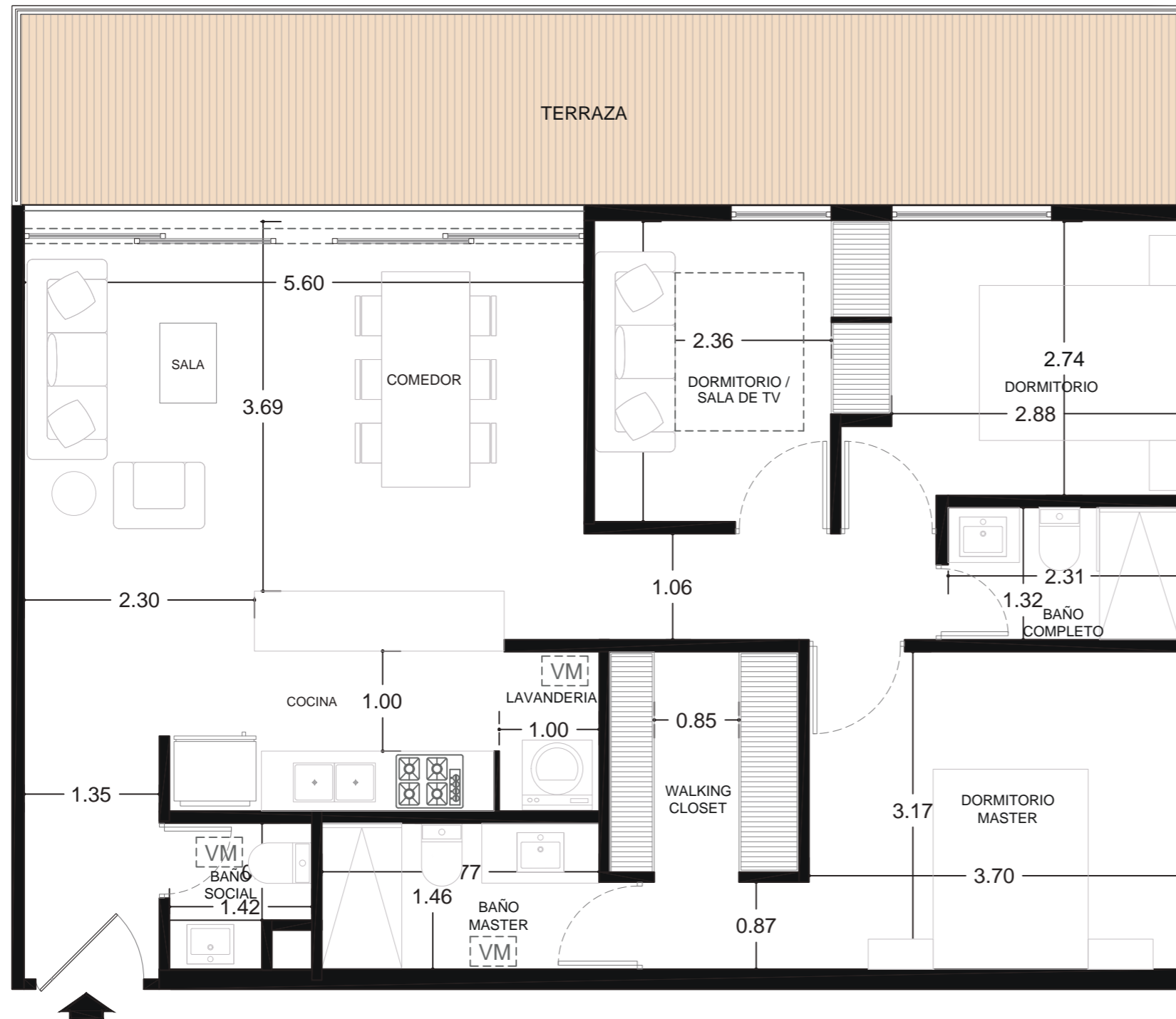


SAN JUAN

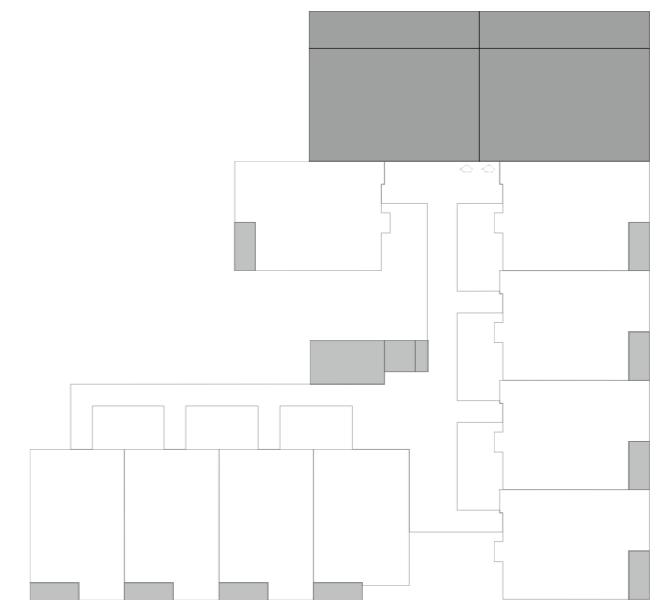
by fez

DEPTO TIPO

105 - 106



DORMITORIOS	3
BAÑOS	2.5
SALA	
COMEDOR	
COCINA	
LAVANDERÍA	
TERRAZA ACCESIBLE	
PARQUEADEROS	2
BODEGA	1



UBICACIÓN



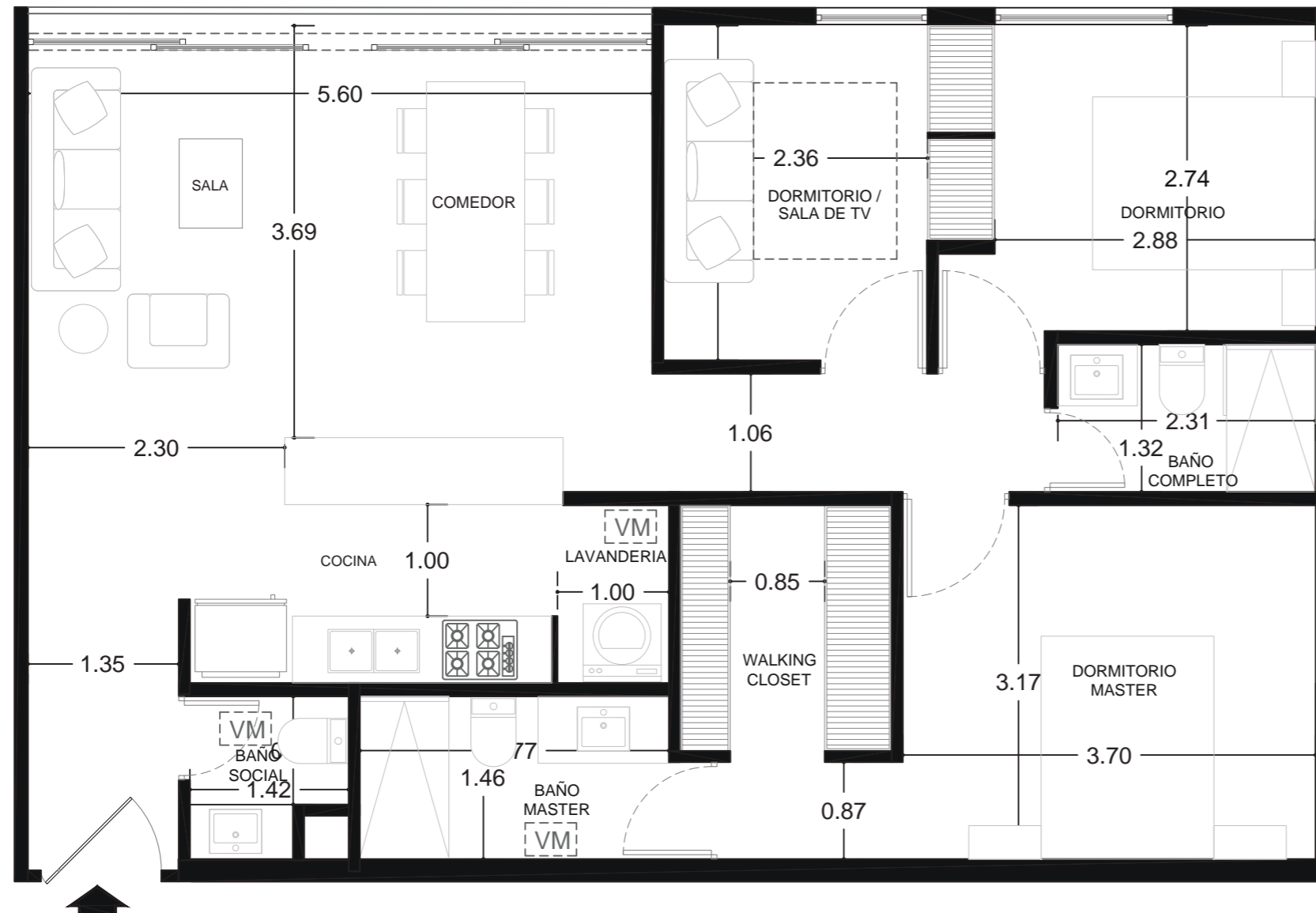
SAN JUAN

by fez

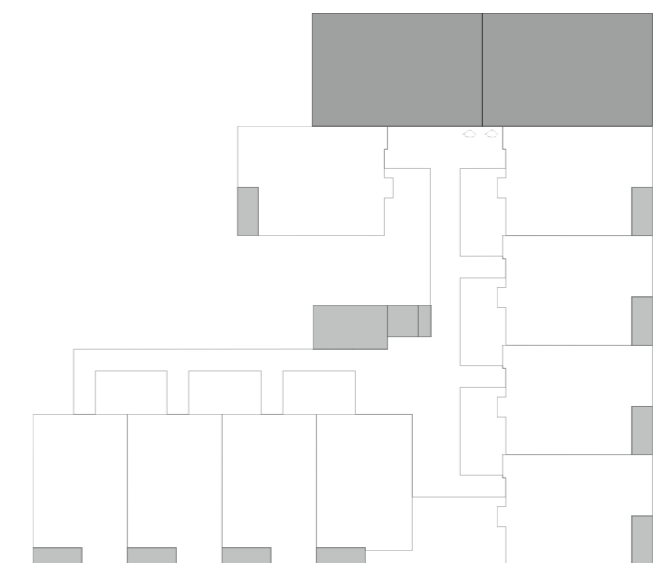
DEPTO TIPO

205 - 206

305 - 306



DORMITORIOS	3
BAÑOS	2.5
SALA	
COMEDOR	
COCINA	
LAVANDERÍA	
TERRAZA ACCESIBLE	
PARQUEADEROS	2
BODEGA	1



U B I C A C I Ó N







**32 EXCLUSIVOS
DEPARTAMENTOS!**

AGENDA TU CITA!



0984425219

 **artec group**

**SAN
JUAN**
by fez